

## Carlyle / Carrier 06NA2300S5NA-A00

### Specifications

Marca	Carlyle / Carrier
Tipo	06NA2300S5NA-A00
Refrigerante	Freon
Refrigerant type	R 134 A or other types
kW at -10°C/+40°C	288,6*
Piston Descargador	✓
Control de capacidad	✓
Comentarios	*Capacity is approx
Tamaños	700x640x500 mm (LxWxH)
Stock	3

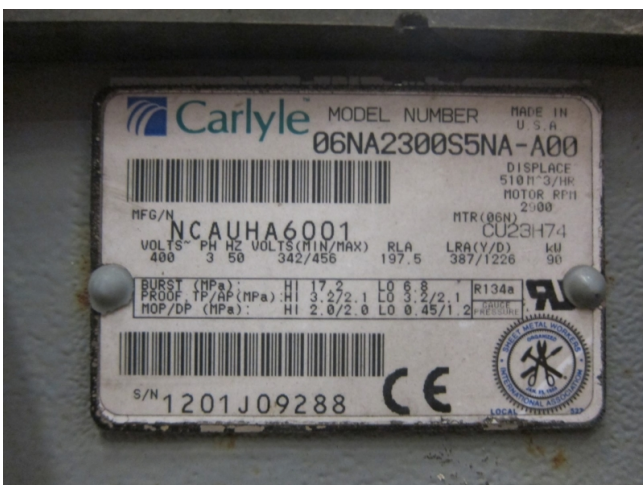
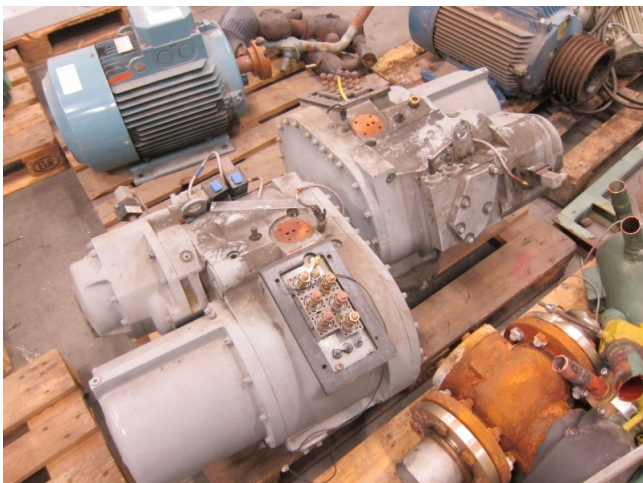
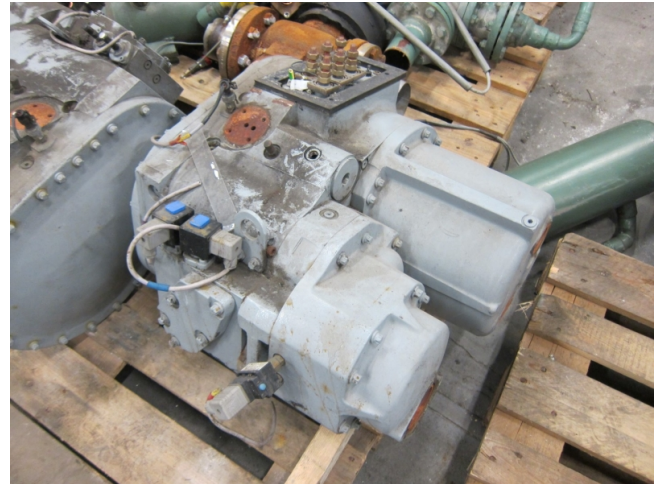


### Description

#### Used Carlyle / Carrier 06NA2300S5NA-A00

Used Carlyle / Carrier 06NA2300S5NA-A00 freon compressor, complete with unloaded start and capacity control. This unit has a cooling capacity of approximately 288,6 kW at -10°C/+40°C.

Why choose for HOSBV? We're not only the largest used refrigeration specialist in Europe, but also, we deliver all equipment including an extensive test, warranty and deliver after an industrial cleaning. \*If requested we are happy to arrange your logistics.



## Compressors

Reference	Size	I nom.	MHA	LRA	LRA (Y)	LRA (S) 1 cp.	LRA (S) 2 cp.
06NA2146S7N	39	70	95	605	191	220	-
06NA2174S7N	46	90	120	715	226	260	-
06NA2209S7N	56	113	145	856	270	330	420
06NA2255S7N	66	130	175	960	303	380	500
06NA2300S5N	80	156	210	1226	387	445	550
06NA2300S5E	80+	174	240	1265	400	460	600

### Legend:

- 06NA - Compressor for air-cooled units
- N - Non-economized compressor
- E - Economized compressor
- INOM - Average current draw of the compressor at Eurovent conditions
- MHA - Must hold amperes (maximum operating current) at 360 V
- LRA - Locked rotor current with across-the-line start
- LRA (Y) - Locked rotor current at reduced current (star/delta start-up mode)
- LRA (S) 1 cp. - Start-up with reduced current with electronic starter (start-up duration 3 seconds max.) for one compressor per circuit
- LRA (S) 2 cp. - Start-up with reduced current with electronic starter (start-up duration 3 seconds max.) for two compressors per circuit